

Waste Heat Value Capture

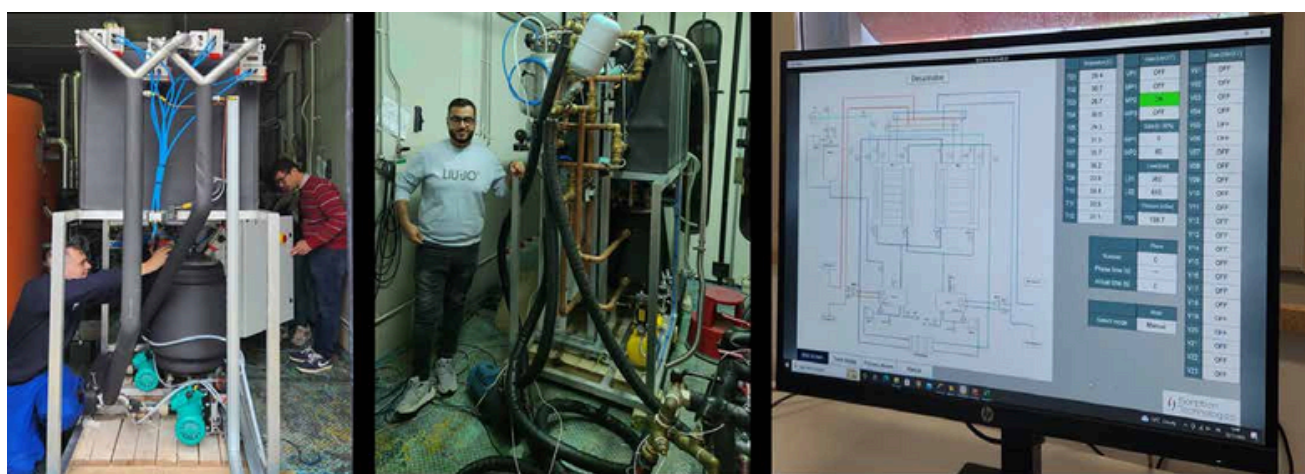
Challenge:

- Factories at Sohar Port discharge 500,000 m³/hr of return cooling water with a +10°C temperature increase into the sea.
- Majis seeks commercially viable ways to capture value from this warm water stream and its elevation difference before discharge.

Objective:

- Use waste heat from Sohar Port's industrial processes to power an advanced desalination system.
- Generate fresh water for port operations, reducing dependence on limited freshwater sources and lowering environmental impact.

Insights:



Impact:

- Cuts emissions, reduces environmental impact, and enables technology transfer that drives Net Zero and Sustainability.
- Supports sustainable water solutions, addresses resource scarcity, and fosters technology adoption that aligned with Vision 2040.



Dr Mohammed Al Saidi

Assistant Professor